



Junior Supporters' Guide



PRESTON NORTH END FC



Contents

- | | | | |
|-----------|---------------------------------|-----------|--------------------------------------|
| 01 | Welcome to Deepdale | 11 | Your Ticket Explained |
| 02 | Arriving at the Stadium | 12 | Deepdale Seating Plan |
| 03 | Saturday Timetable | 13 | Deepdale Duck |
| 04 | Pre-Match Entertainment | 14 | The Facts |
| 05 | Fan Zone | 15 | Players Page |
| 06 | On the Concourse | 16 | Songs and Chants |
| 07 | Official Club Store | 17 | Gentry Day |
| 08 | Your Visit | 18 | Community and Education Trust |
| 09 | Get Involved with PNE | 19 | Getting Social |
| 10 | Season Cards / Ticketing | 20 | Contact Us |

Welcome to Deepdale

Getting to Know Us

Deepdale is the home of Preston North End Football Club, also known as the Lilywhites!

Established in 1880, we are proud to be one of the founder members of the EFL and the first team to ever achieve the double, winning the league and the FA Cup in the first league season in 1888. This memorable season also saw North End go unbeaten in the league and the FA Cup, giving us the famous title 'The Invincibles'.

In recent years, North End were crowned third division champions in 1996 and second division champions in 2000. After nine Play-Off attempts across the second, third and fourth tiers, the Lilywhites secured victory at Wembley in 2015, back into the Championship.

Several notable players have played for Preston North End over the years, including England legend Sir Tom Finney, Scottish defender and future Liverpool legend, Bill Shankly and the club's record appearance maker and Republic of Ireland international goalkeeper, Alan Kelly Senior.

Modern heroes have included David Moyes, Kevin Kilbane, Paul Gallagher and even England's former captain and global superstar David Beckham!

Ryan Lowe is currently the manager looking to guide the Lilywhites to the Premier League for the first time in the club's history.

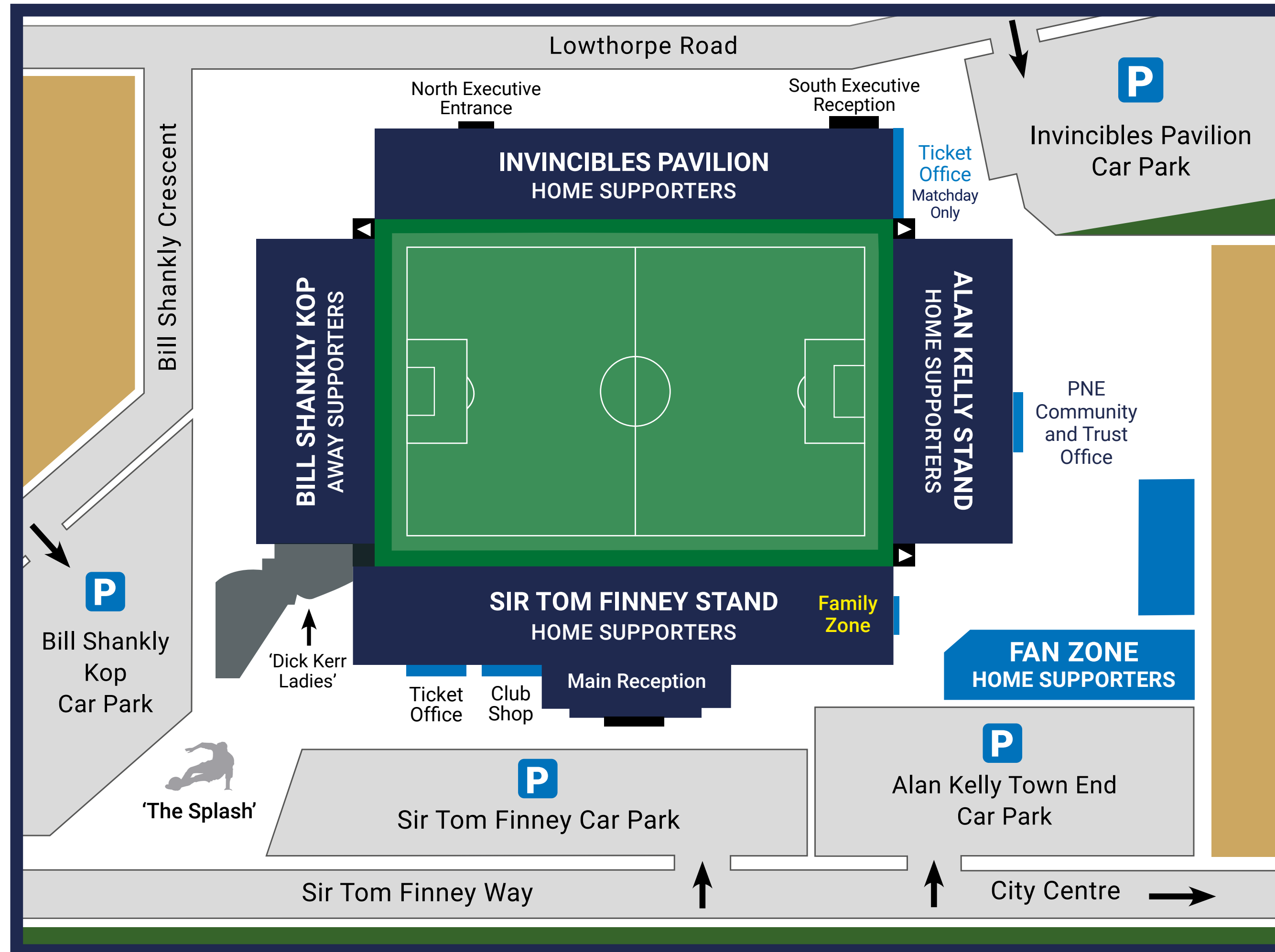
Sir Tom Finney Way, Deepdale, Preston, Lancashire, PR1 6RU

web: www.pne.com • tickets: www.mypne.com

call: **0344 856 1964** • email: enquiries@pne.com



Arriving at the Stadium



Before the Game

It is recommended to arrive at the stadium at least an hour before kick-off. This will allow sufficient time to purchase/collect your tickets if required, safely enter the stadium and browse the snacks and refreshments available from the kiosks. Should this be your first time at Deepdale, stewards will be on hand both inside and outside the ground to assist you in finding your seat.

The Dick, Kerr Ladies Monument

In 2017 a monument for the Dick, Kerr Ladies was opened to remember the fantastic efforts and achievements, here at Deepdale. The Dick, Kerr Ladies were one of the first ladies football teams in England and one, if not, the most successful team of all-time, playing from 1917 until 1965. You will find this monument overlooking the Sir Tom Finney 'splash' statue on the wall.

Matchday Supporter Liaison Officers

Keep a look out for our matchday supporter liaison officers around the ground who will assist as best they can with any queries you may have, or to have a quick chat about all things PNE.

Sir Tom Finney Statue - 'The Splash'

Preston North End's most famous player, Sir Tom Finney, unveiled his signature 'Splash' statue in 2004 which was inspired from a photograph taken at a waterlogged Stamford Bridge in a match versus Chelsea in 1956. Around the statue are a number of special bricks forming the 'Walk of Fame' with the bricks occupying a combination of supporters and ex-PNE players' names.

The Fan Zone

Head down to the ground early and visit the Fan Zone for all your pre-match needs with **LIVE** music, fun games and activities. There are former player Q&As meet and greets along with **TVs** to watch live sport. There is a wide range of hot and cold food, snacks and soft drinks available too.

You can find out more on our **Fan Zone page** later in the guide.

Sir Tom Finney Way, Deepdale, Preston, PR1 6RU

web: www.pne.com • email: enquiries@pne.com • call: 0344 856 1964

Saturday Timetable



9am • Ticket Office and Club Shop Open

Beat the queues and buy your tickets in advance! Pop in and see us at the Sir Tom Finney Stand ticket office **from 9am** or give us a call on **0344 856 1966**.

Tickets can be booked on **www.mypne.com** up **until kick-off**. It does however close for the day at half-time. Head to the club shop to buy your replica shirts, scarfs and keep sakes!

12pm • Fan Zone Opens

Located at the corner of the Alan Kelly Town End Stand, take a visit to the Fan zone for some pre-match entertainment, fun games, hot or cold food, drinks, and snacks.

1pm (approx) • The Players Arrive!

If you're around the ground currently, head over to the players' entrance on the Alan Kelly Town End to see your favourite players as they arrive!

1pm • Invincibles Pavilion Ticket Office Opens

Our second home ticket office opens from 1pm. Located at the corner of the Alan Kelly Town End and Invincibles Pavilion, visit this ticket office for tickets for today's game.

1.30pm • Turnstiles and Family Room Opens

Get the first glimpse of the pitch when the turnstiles **open at 1.30pm!** Find your seat, buy a programme, and have a look at the refreshments on offer at the kiosks.

If you have tickets for our Family Zone, in the Sir Tom Finney Stand, then make sure you visit our Family Room on the concourse which is full of lots of fun games and activities.

2pm • Team News

Keep an eye out on social media for the team news from 2pm. The starting line-up, substitutes and any other news will be announced at this time – you can often find it first on our Twitter account - **@pnfc** – or on the official website **pne.com**

2.15pm (approx) • Players Warm Up

If you want to see the players warming up and preparing for today's game, then make sure you're in your seat for 2.15pm. If you're sat in the Invincibles Pavilion blocks A to D or the Alan Kelly Town End, head to the tunnel to cheer the team as they come out to warmup!

2.45pm (approx) • Teams Go In

The teams go back in for their pre-match team talk and preparation.

3pm • Kick-Off!

The action begins! Be loud and proud and cheer on the boys!

3.45pm • Half-Time

Grab your half-time refreshments from the food and drink kiosks and enjoy our half-time entertainment from your seat.

4pm • Second Half Kicks-Off

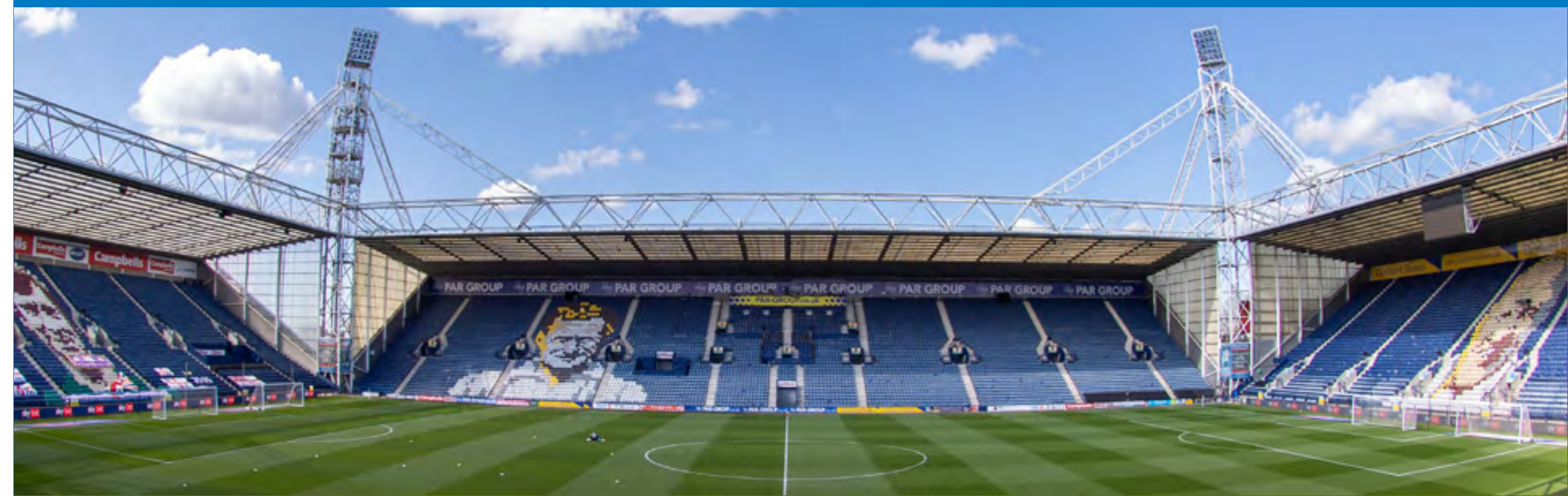
Grab your half-time refreshments from the food and drink kiosks and enjoy our half-time entertainment from your seat.

4.45pm • Final Whistle

The Sir Tom Finney Stand club shop is open until 5.30pm.

Why not pay the shop a visit for all the latest club merchandise and memorabilia.

Have a safe journey home and we look forward to seeing you at Deepdale again soon!





Pre-Match Entertainment

Now that you're finally here at Deepdale, make sure you're as prepared as the players will be for the game by getting stuck in to some pre-match entertainment and fun!

The Family Zone

Seated in our super cool Sir Tom Finney Family Stand. Enjoy face painting, arts and crafts and keep a look out for Deepdale Duck who visits this area regularly.



The Game Room

The GAME Room is full to the brim of – yes you guessed it – games! You can find The GAME Room in the Sir Tom Finney Stand, where the latest FIFA is available to enjoy, as well as lots of colouring activities and the opportunity to write to your favourite player!

Write a letter to a PNE player using the template provided in the GAME Room before posting it into the PNE letterbox located opposite and who knows, you may receive a reply!



Game Pods - Play Before a Game!

Our awesome Game Pods can be found not only in the Sir Tom Finney Stand, but also on the Invincibles Pavilion and Alan Kelly Town End concourses.

Warm up for the match by playing the latest FIFA with your mates. Are you ready to mastermind the first Preston North End victory of the afternoon? Remember to take turns and give everybody a share of the console!





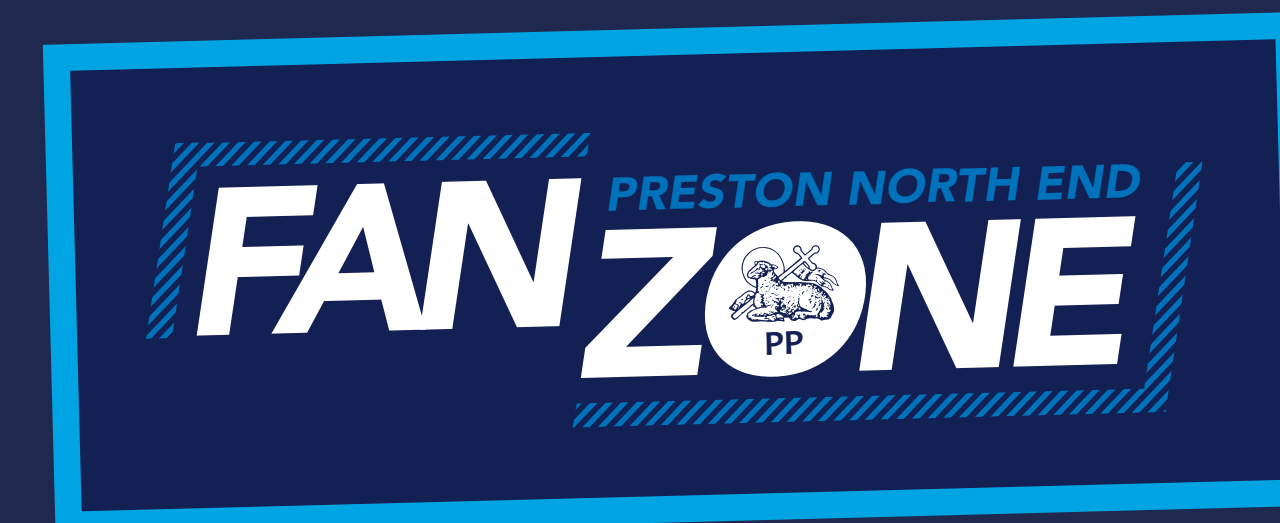
Fan Zone

Head down to the ground early and visit the Fan Zone for all your pre match needs with **LIVE** music, entertainment, former player Q&As along with **TVs** to watch live sport.

Hot and cold food, snacks and soft drinks. There is also a wide selection of alcoholic beverages for your parent or guardian to enjoy.

Our community team run pre-match activities for all the family, including face painting, inflatable shootouts and many more.

It is located in the corner between the Alan Kelly Town End and the Sir Tom Finney stand. Check our social media channels for the latest Fan Zone timings and special offers.



On the Concourse

Refreshments

Our caterers, **Heathcote&Co Deepdale**, provide a range of refreshments which are available to purchase on the concourse before the match and at half-time. Please see the menus on this page which highlight the food and drink offerings available. All items are sold subject to product availability.

Please note: That some fixtures may be declared alcohol free, the visiting club will be advised accordingly should this be actioned.

Snacks

Chocolate bars *	£1.30
Crisps *	£1.50
Sweet/chocolate bags *	£2.80

Hot Food

Pies (Clayton park) *	£3.20
Pie (Clayton park) peas and gravy **	£4.00
Burger (Big Al's) (1/4 lb)	£3.50
Cheeseburger (Big Al's) (1/4 lb)	£4.00
Hotdog (Mom's)	£3.50

Drinks

Soft drinks *	£2.30
Bottled water (500ml)	£2.00
Ribena Light (500ml)	£2.30
Hot drinks *	£2.20

Meal Deals

Two Hot Drinks & Two Pies *	£10.00
Two Soft Drinks & Two Pies *	£10.00

Snack Deals

Hot Drink and Chocolate Bar *	£3.50
Soft Drink and Chocolate Bar *	£3.50

Heathcote&Co
DEEPDALE



* A varied selection of these items will be available
** Selected kiosks only
*** Some deals exclude certain items



Payments made for food
or drink are contactless only



Official Club Store



From replica kit to scarves, or training wear to mini Deepdale Ducks and lots more in between. The club shop is the place for all your official Preston North End merchandise and memorabilia.

You can find us at the Sir Tom Finney Stand, next to the main ticket office, or visit our website at pne.clubstore.co.uk to get your purchases delivered directly to your door or to make use of our online click and collect service.

Opening Times

Monday to Saturday: 9am until 5pm

Saturday matchday: 9am until kick-off
(Opening again until 5.30pm after the match)

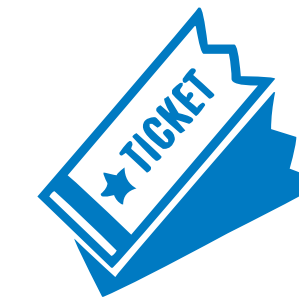
Evening matchday: 9am until kick-off
(We do not re-open after night matches)

Need more information?

You can call the PNE Club Store on **0344 856 1965** or email pnefc@clubstore.co.uk



Your Visit



Junior Tickets

Prices start from **£6** for all **11 to 18**-year-olds. **Under 11s** can attend from **£5** per game! All children under 14 must be accompanied by an adult. Bring the whole family and benefit from our Sir Tom Finney Stand Family zone pricing, with discounted tickets for all over 18s accompanied by a junior or under 11.

Why not keep your ticket as a keep sake and see how many you can collect throughout the season.

The One and Only - Matchday programme

The One And Only is your one and only essential reading material before the match. Get up to scratch with all the latest goings on at Deepdale

Grab your copy of **'The One And Only'** matchday programme. The only official matchday programme of Preston North End is jam-packed with player interviews, fun features and plenty more content to be enjoyed by supporters of all ages. including the likes of interesting facts and quizzes where young fans can put their knowledge of the Lilywhites and footballing world to the test.





Get Involved



Soccer Schools

Away from the matchday, the official soccer school of PNE is hosted every school holiday for boys and girls from ages five to 14 years of age.

What better way to spend your time off school than playing football all day with Preston North End? We'll be hosting skills, drills and fun activities for all to enjoy. There's even an activity zone for those wanting a break from the football, where console games, arts and crafts and multi-sport activities are all the rage throughout the day.

Birthday Parties

Your birthday should always be a special occasion, that's why for every matchday at Deepdale, we're offering junior supporters the chance to host their birthday bash at Preston North End.

Play football with your mates, meet the manager, the players and cheer the boys on from the stands are just a few things hosting a birthday party offers!





Season Cards / Ticketing

If you have not signed up for a season card this season, the easiest way to book tickets on a match-by-match basis is with a member card. Member cards are free of charge, so there's no reason not to register for one to make attending Deepdale as easy as possible!

Tickets for games are loaded electronically onto the card and scanned at the relevant turnstile to gain entry. Games can be booked and loaded onto a member card either online, over the phone or in person. Please remember to bring your email receipt with you which confirms your seat details.

E-tickets are also now available when booking online, allowing fans to print their ticket off at home, with no need to obtain a paper ticket.

To encourage use of a member card in the future, any home supporters who obtain a paper ticket will be issued with a member card to use for all future purchases.

Preston North End Ticket Office

Sir Tom Finney Way, Deepdale, Preston, PR1 6RU

web: mypne.com • call: 0344 856 1966 • email: ticketoffice@pne.com



Turnstile

Please look for the correct turnstile number for entry to the stadium.

Seat Details

These are your unique seat details. Row one is at the front with row 39 being at the back. You can find the blocks on our seating plan.

Name

The name the ticket was booked under. We encourage all supporters to book tickets under all the names of those who are attending to ensure each person gains loyalty points.

Fixture Details

Opponent, date and kick-off time.

Stand

The area you will watch the game from.

Barcode

This barcode is used to gain entry to the stadium. Scan the barcode face up on the reader to enter. Please ensure the barcode is not damaged or defaced as this may affect your entry.

Age Band

This is the age category of the ticket sold.

Price

All tickets are marked with the relevant price. This price may change for cup fixtures.

PRESTON NORTH END FOOTBALL CLUB

EFL SkyBet Championship
● Preston North End v Stoke City
Date: Saturday 20th August 2022
Kick-off: 15:00

Sir Tom Finney stand

● Turnstile: 1 to 4

Block	Row	Seat
B	23	25

● Name: Aaron Person
● Payref: 1457524096
● Member No: 232129

● Junior
£7.00

15124625505713008806734213

Concession

MATCHDAY TICKET sky bet EFL

Member Number

This is your unique member number. Quote this number when booking tickets.

Reference Number

This is your booking reference for the transaction. Quote this number at the ticket office if you have any queries.

Your Ticket Explained

Ticket office: www.mypne.com • call: 0344 856 1966 • email: ticketoffice@pne.com

Deepdale Seating Plan

Have you ever wondered how many seats there are at Deepdale? Well, rather than count every seat inside the stadium, let's do the maths and work out how many there are?

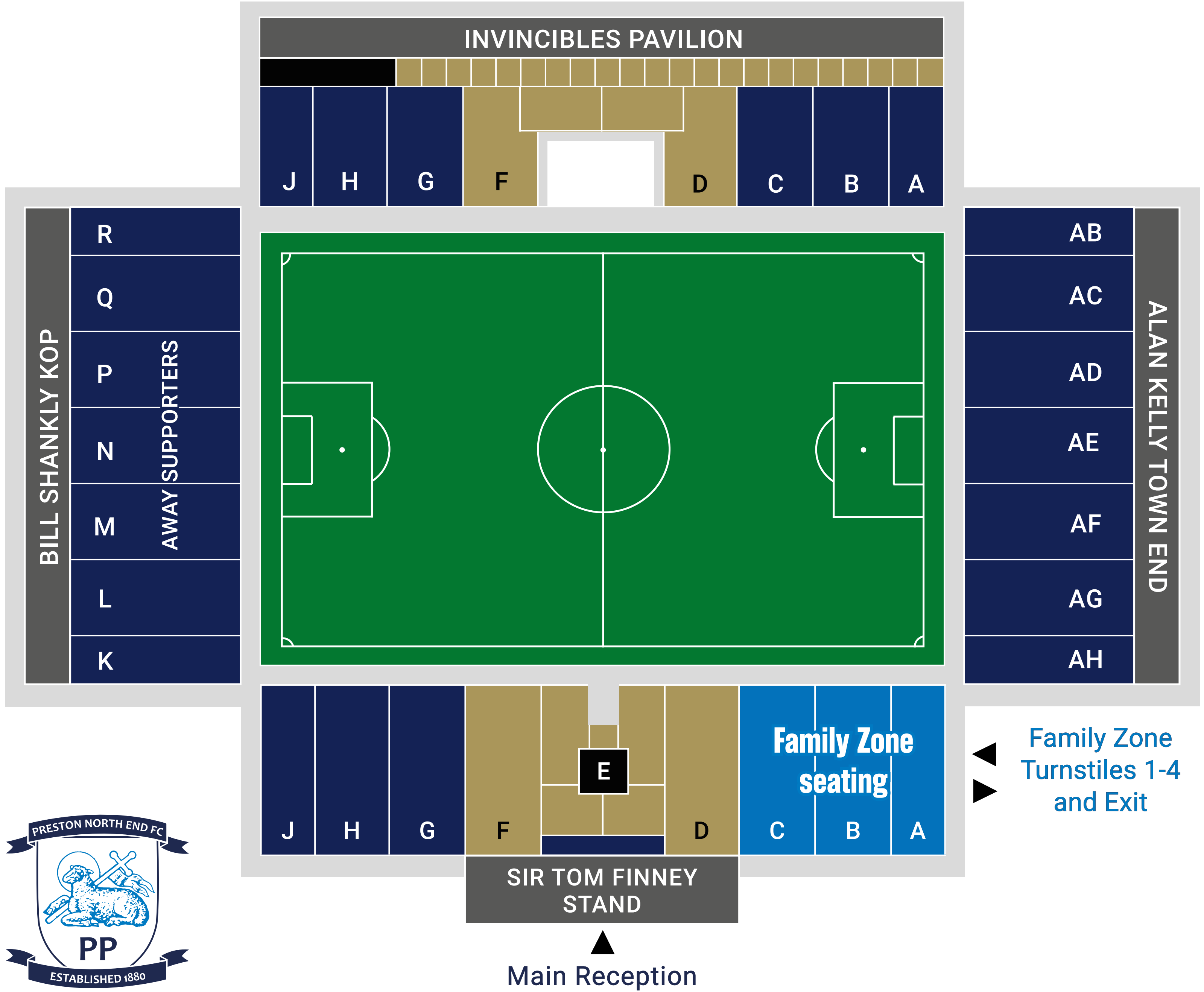
The Sir Tom Finney Stand was constructed in 1996, for approximately **8,000** fans making it the biggest stand at Deepdale!

Two years later, The Bill Shankly Kop opened and then the Alan Kelly Town End in 2001 with **both stands** behind the goals holding up to **6,000** supporters each.

The newest stand at Deepdale is the Invincibles Pavilion which opened its doors for the first time in 2008 and can house up to **3,500** fans. So with the complete modern reconstruction of the stadium, the capacity at Deepdale is now just over **23,000**.

Home supporters have a choice of seating in the Sir Tom Finney Stand, Alan Kelly Town End and the Invincibles Pavilion, with the Bill Shankly Kop used to accommodate visiting supporters.

All four stands offer excellent views for all of our junior supporters.





Deepdale Duck

PNE's mascot is the fun-loving, yet mischievous, Deepdale Duck who's been flying the flag from the sidelines for over 20 years!

Known for his bouncy behaviour and warm welcome, Duck provides the very best entertainment to young fans on a matchday and at the end of the 2016/17 season, he was presented with a special award by the EFL. Every PNE supporter knows exactly when and where to find the Duck, with our posters around the ground. Keep your eyes peeled for the footprints he has left behind! Duck can also be found pitchside during the game, as he wills the team on to victory. At your next game, why not try and find the Deepdale Duck?

He loves an autograph or photo, especially when you post your selfies on Twitter! Remember to tag the Duck in your tweet @Deepdale_Duck so that he can see and share it!



Deepdale Duck





Duck's Whereabouts



1.35pm - 2pm: Club Shop, Ticket Office, Fan Zone

Buying your match tickets? Looking for some PNE goodies in our shop before the match? I'll be leaving the nest just after 1.30pm and getting ready for kick-off!

2pm until 2.45pm: Wandering Around the pitch

Do you think you can spot me wandering around the stadium getting up to my usual mischief before kick-off? Keep your eyes peeled for me riling up the crowd as the teams come out of the pitch!

2.45pm - 3pm: Leading Out the Team

I'll be beside the tunnel just before kick-off and then leading the boys out onto the Deepdale pitch ready for action!

3.30pm - 3.45pm: On a Duck Break

A quick break to cool off in my pond.

3.45pm - 4pm: Half-time Penalties

Watch out as I get up to some mischief posing for photos with the grassroots teams taking part in half-time penalty shoot outs and with fans at the bottom of the Sir Tom Finney Stand.

4pm - 4.20pm: Back Supporting the Team for the Second Half

I'll be back out there pitchside for the start of the second half with the rest of you, supporting the players with one final push for three points.



4.20pm until 4.40pm: Back in my Pond

Back supporting the players one last time for one final push for three points.

4.40pm until 5pm: Until Next Time

Give me a wave as I bid you farewell until our next home game from the bottom of the Sir Tom Finney Stand and from inside the concourse.

All times listed are approximate.



The Facts

Stadium Name:
DEEPPDALE

Stadium Capacity:
23,404

Year Established: **1880**
How old is the football club?

Club Nickname:
THE LILYWHITES

Club Mascot:
DEEPPDALE DUCK

Most Legendary Player:
SIR TOM FINNEY

Most Club Appearances:
513 - ALAN KELLY Senior

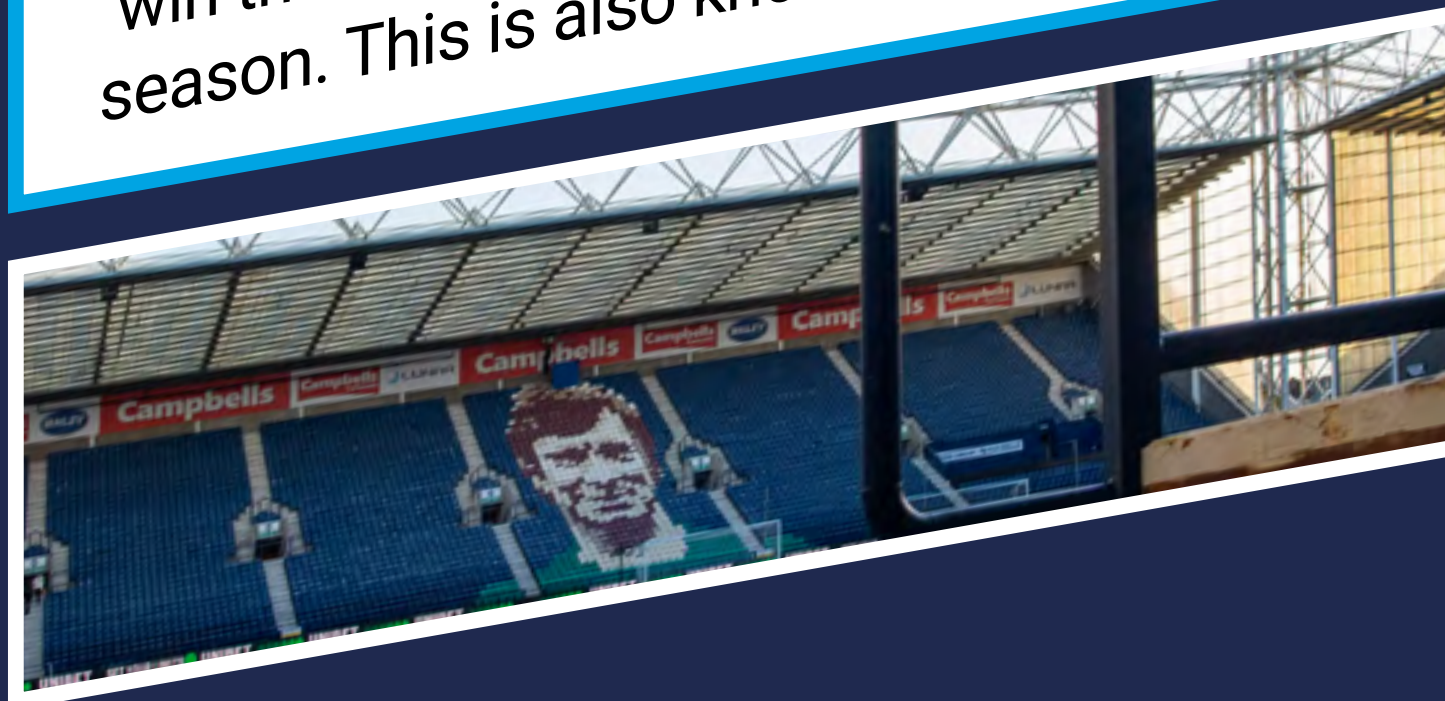


DID YOU KNOW?

Preston North End were one of the 12 founder members of the Football League (now the called the EFL).



Preston North End were the first team to ever win the league and the FA Cup in the same season. This is also known as 'The Double'.



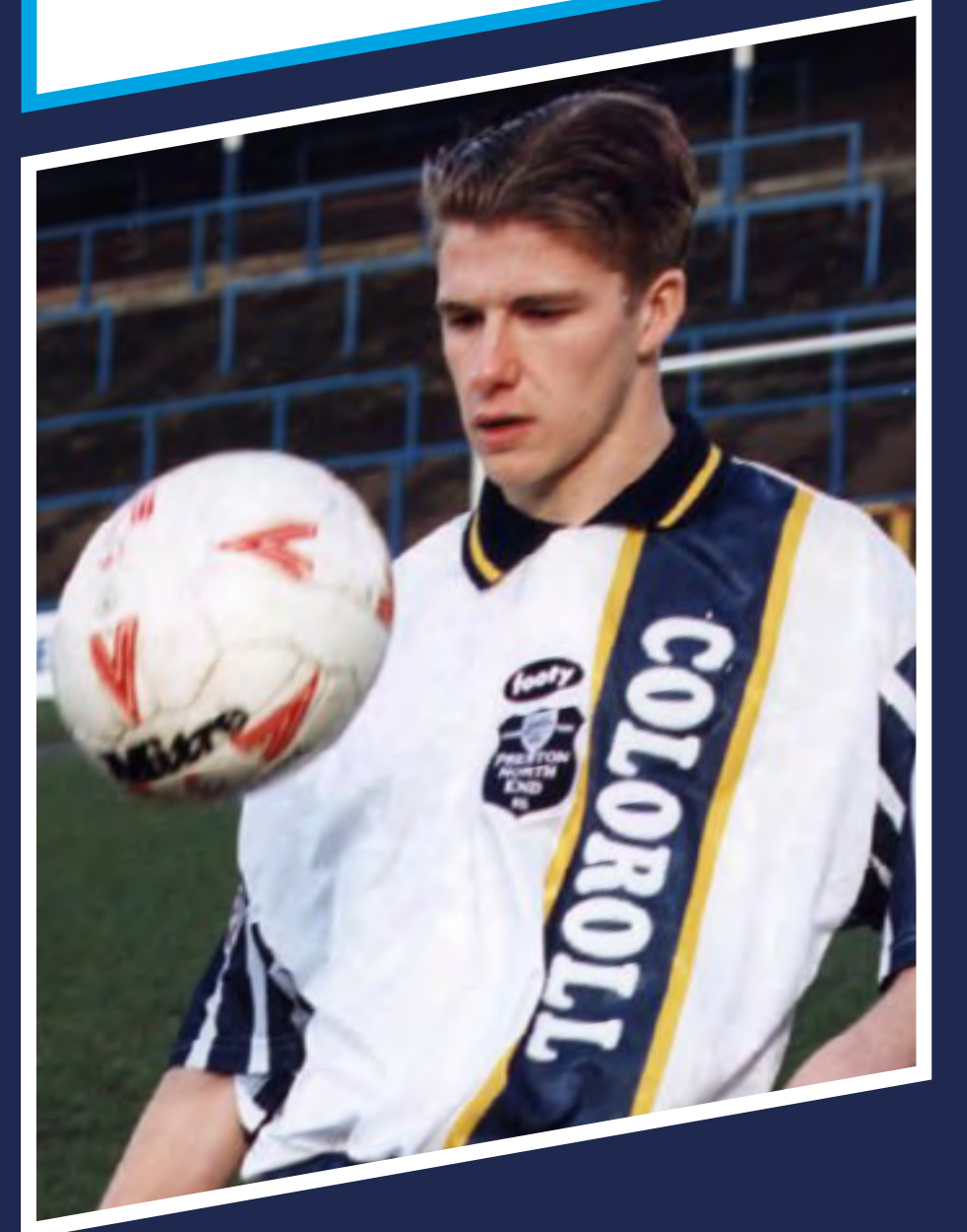
The Dick, Kerr Ladies were one of the first ladies football teams in England and one, if not, the **most successful team of all-time**, playing from 1917 until 1965.



We were also the first team to go unbeaten in the league and FA Cup, giving us the famous title 'The Invincibles'.



Former Manchester United and England midfielder **David Beckham** made five appearances for Preston North End while on loan in 1994/95 and scored two goals for the club!





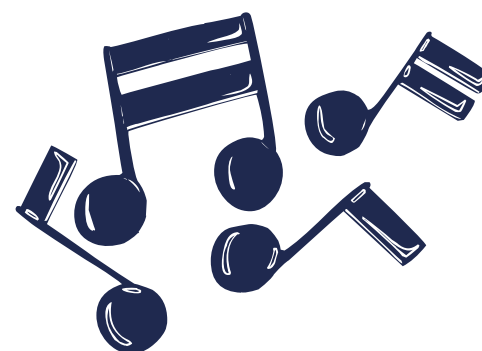
Songs and Chants



**“PNE PNE PNE, PNE PNE PNE,
PNE PNE PNE, PNE...PNE!”**

**Wise men say,
Only fools rush in,
But I can't help falling in love you,
Take my hand,
Take my whole life too,
For I can't help falling in love you,
The North End! The North End!**

**Oh when the Whites, Go marching in,
Oh when the Whites, go marching in,
I want to be in that number,
When the Whites, go marching in,**



**“We're the one and
only North End”**

4 BEN WHITEMAN



MIDFIELDER

5 PATRICK BAUER



DEFENDER

8 ALAN BROWNE



MIDFIELDER

11 DANIEL JOHNSON



MIDFIELDER

13 ALI MCCANN



MIDFIELDER

16 ANDREW HUGHES



DEFENDER

18 RYAN LEDSON



MIDFIELDER

19 EMIL RIIS



FORWARD

Players Page

To find out more about the featured players above along with the rest of the PNE squad then make sure that you visit our Player Profile pages:
www.pne.com/teams/first-team





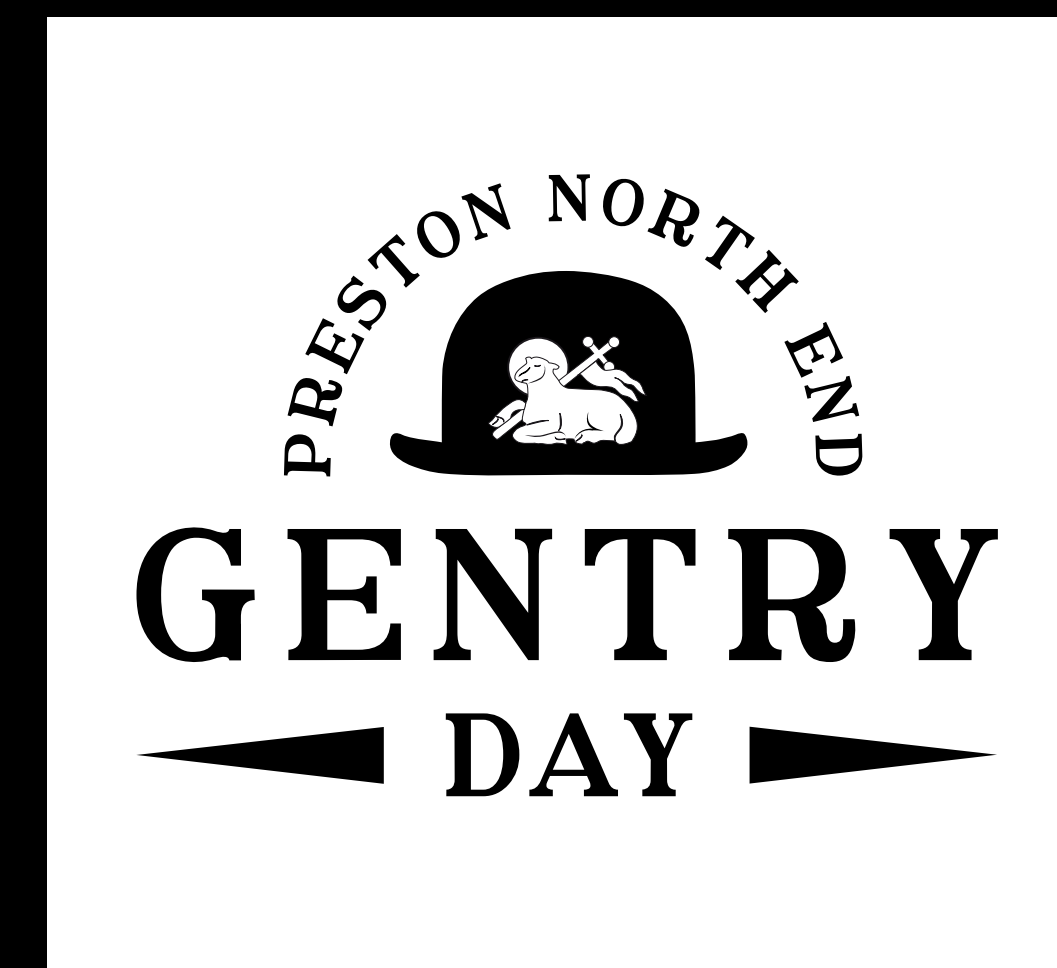
Gentry Day

Gentry Day is a unique remembrance day created by fans and is celebrated annually, remembering Preston North End fans and former players who have passed away in the last 12 months.

The tradition stemmed from former Preston North End manager Alan Ball senior, who spoke highly of our supporters, stating **'Preston fans are the best, they are the Gentry'**.

Following this, North End fans brought the Gentry to matches and started to wear smart suits and bowler hats to games up and down the country. This eventually faded out, but returned again in 2005 following the passing of an original member of the Gentry from the 1970's.

It was in his honour that Preston North End fans organised the **'Return of the Gentry'** for an away visit to QPR. 'Gentry Day' has since become an annual event from 2008 onwards. We have since held the memorable day at the likes of Charlton Athletic, Newcastle United, Hull City, Sheffield Wednesday, Brentford and more recently Barnsley, Bolton Wanderers, Fulham and West Bromwich Albion.





Community and Education Trust

Preston North End Community and Education Trust (registered charity 1130773) is PNE's community department. Our aim is to use the power of the badge and the football club to work in partnership with local communities improving their lives and their environment.



The Trust go out into the community and deliver projects centred around; sports participation; education; health and social inclusion putting Preston North End at the heart of its community.

PNE's reputation as a family orientated football club, evident in its awarding of the EFL Family Excellence Award for the last 11 years is aided by the work of the Community Trust; both every day in its delivery out into the community and on a matchday.



Preston North End CET are also responsible for arranging and accompanying the first team squad on visits and understand the importance of our players as role models in the local area.



We are a self-financed department of the football club and generate funds by working with partners such as The EFL Trust, Premier League Charitable Fund and Sport England. We also raise money through school work, holiday camps and generous donations from businesses and fundraisers.

PNE Community and Education Trust • Sir Tom Finney Way, Deepdale, Preston PR1 6RU
web: www.pne.com/pnecet • call: 01772 693309 • email: community@pne.com



Getting Social

Let us know when you arrive at the ground by tagging us in your photos...



Follow Like Comment Share

Keep up to date with all aspects of the club across all of our social media channels.

Make sure you're following us across all of our platforms so you don't miss out on any of our exclusive content and latest news.

Get involved to view and interact with our pre-match build up, behind the scenes action and much more...

www.pne.com • media@pne.com



@pnefc

Check out our official **Twitter** feed one hour prior to kick-off for the starting XI and Tweet your predictions, pictures and views using our hashtag **#PNEFC**.



@pnefcofficial

Tag **Insta** @pnefcofficial into your photos from the game, commenting on the club's matchday and behind the scenes pics.



OfficialPNEFC

Check in to the matchday event at PNE to show your friends where you are and **'Like'** the club's official **Facebook** page for exclusive news.



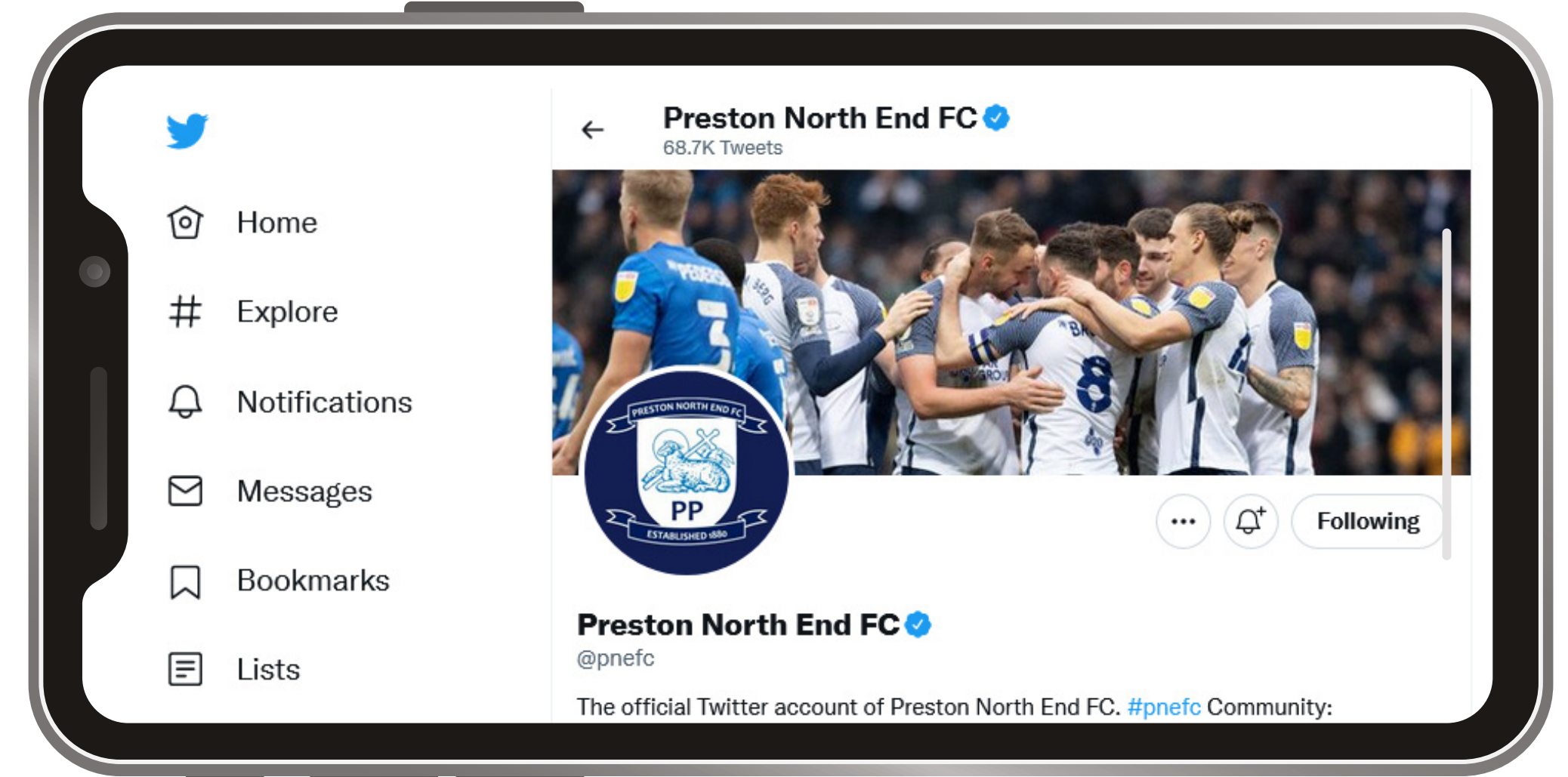
@pnefc

Check out our fun new **TikTok** channel for a more quirky angle on PNE content that you can share and enjoy with your friends and family.



pnefcofficial

We also have a **YouTube channel** with highlights posted throughout the season, along with player features and videos showcasing the best of our club video channel iFollow.





Contact us

Department

Number

Email Address

Ticket Office

0344 856 1966

ticketoffice@pne.com

Club Shop

0344 856 1965

pnefc@clubstore.co.uk

Main Office

0344 856 1964

enquiries@pne.com

Commercial

0344 856 1960

commercial@pne.com

Community

01772 693 309

community@pne.com

Ground Safety

0344 856 1964

safety@pne.com

Media

0344 856 1964

media@pne.com

**Supporter and Disability
Liaison Officer**

0344 856 1966

slo@pne.com

Please note, all 03 numbers are local rate numbers and are included in inclusive minutes on mobile contracts.

Sir Tom Finney Way, Deepdale, Preston, PR1 6RU

web: www.pne.com • tickets: mypne.com



Thank you for visiting PNE
We hope you enjoy the match!

PRESTON NORTH END FC